

D6642H D6643H D6644H

Digital Audio Processor



Description

The device maximally supports 16 input/output analog channels and 1 extended USB recording and broadcasting channel. It is equipped with high quality 21 level pre-amplifier circuit, DSP processing bus structure, and with multiple functions such as echo eliminator, noise eliminator to restore high quality sound. It's mainly applied in a variety of large venues like theater, concert hall, remote video conferencing, sports venues, churches, conference centers, theme parks and so on. Its operation is simple and intelligent.

Features

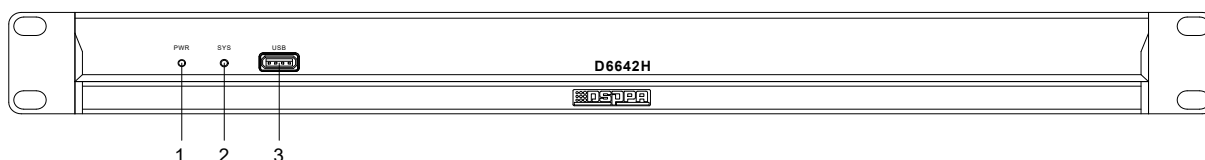
- 24 bit/ 48KHz sampling frequency, high-performance A /D, D/A converter and 32-bit floating-point DSP processor, full-function matrix mixing function to provide users with excellent and clear sound.
- High-precision input sensitivity adjustment with 21 levels, 3dB steps; the maximum input gain is 60dB.
- Efficient algorithm processing: AFC, AEC, ANS, AUTOMIXER, EQ, GATE, AGC and so on.
- Abundant interface extension: Input and output GPIO of 8 channels can be customized. Support external input level of 3.3 ~ 24V; USB interface supports recording and broadcasting, scene preservation and other functions. RS-485 supports automatic camera tracking, easy to achieve video conferencing; RS-232 two-way serial control interface, it can control or be controlled, such as video matrix, camera and other equipment.
- Support scene preset for multiple group, user-friendly operating software interface.
- Fast operation: web control mode, support Android, IOS system.
- Support 1 USB recording channel.

Specifications

Model	D6642H D6643H D6644H
Maximum Number of Inputs	16
Maximum Number of Outputs	16
Number of 232 Serial Port	1
Number of 485 Serial Port	1
Number of GPIO	8, freely configurable I/O
Number of RJ45	1
Number of USB	1, support recording and broadcasting
Maximum Analog Gain	-60dB
Phantom Power	48V
Input-output Quantization	48KHz/24bit
A/D Dynamic Range	120dB
Input CMRR	80 dB @ +24dBu @60Hz
Input Impedance	20kΩ balance, 10kΩ unbalance
Maximum Input	24dBu
D/A Dynamic Range	120dB
Channel Isolation	100dB
Frequency Response	20~20kHz (±0.25dB)
THD (THD+N)	≤0.002% @1kHz, +4dBu
Output Impedance	100 Ω balance, 50 unbalance
Maximum Output	24dBu
Working Power	AC110V-220V/50Hz
Working Temperature	0~40℃
Package Dimensions (mm)	567×377×98
Machine Dimensions (mm)	483×270×44
Gross Weight	3.2kg
Net Weight	2.15kg

Front / Rear Panel

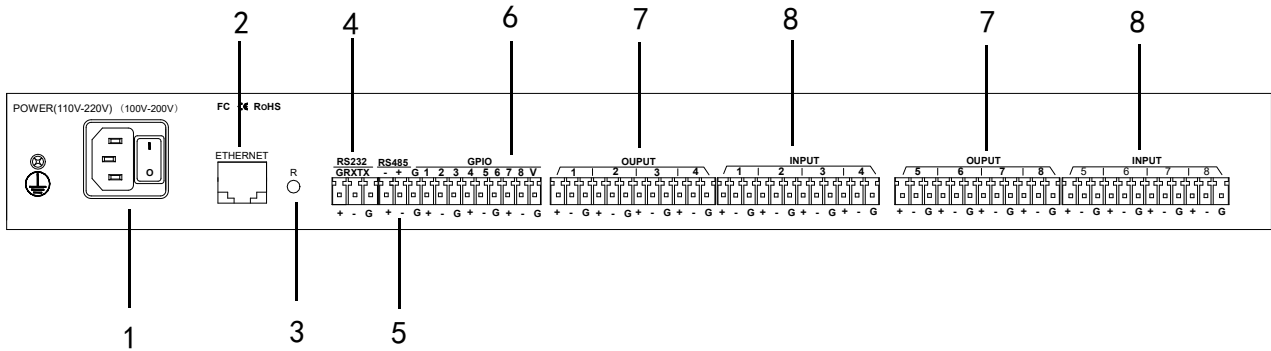
Front Panel



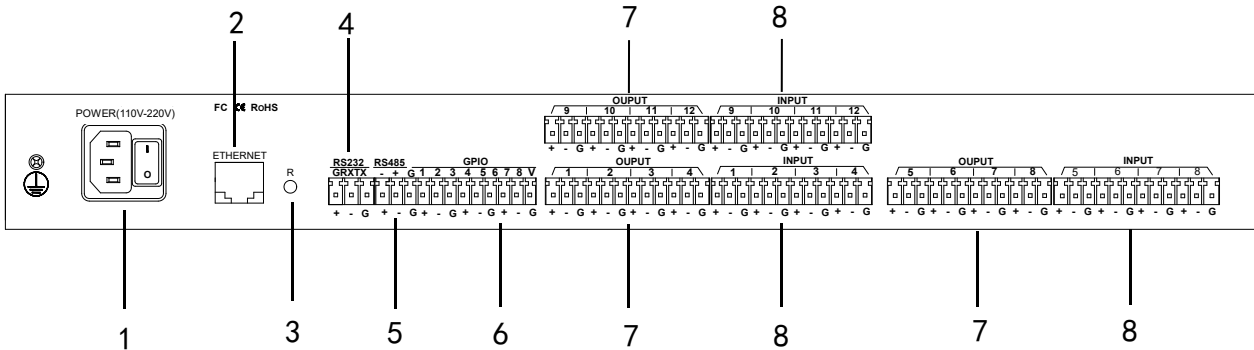
- (1) PWR: Power indicator. When the light is on, it represents the power supply is normal. When the light off, it represents the device power supply abnormal;
- (2) SYS: Status indicator. When the light is flashing, it represents the equipment is under normal operation condition, otherwise the equipment is failure;
- (3) USB: Support recording and broadcasting function;

Rear Panel

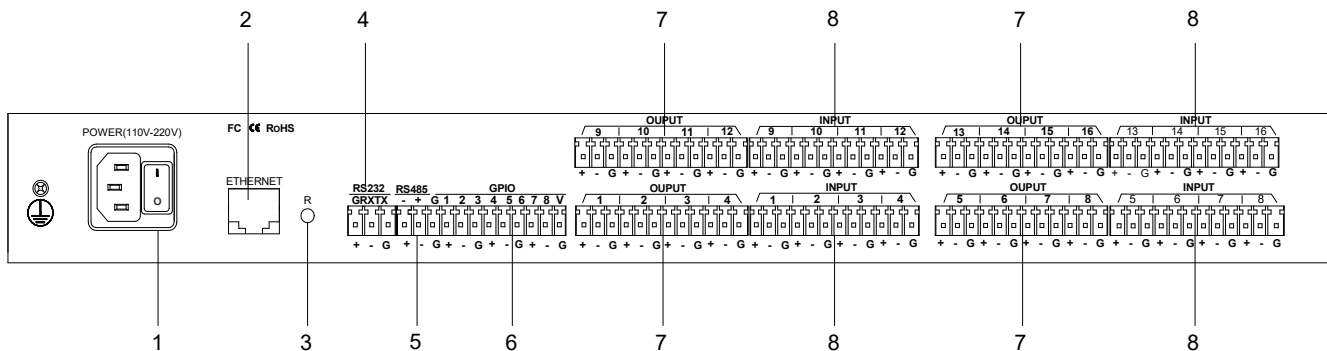
D6642H Rear Panel



D6643H Rear Panel



D6644H Rear Panel



- (1) Power: power plug and switch button, support AC 110V ~ 220V power supply, 50Hz.
- (2) ETHERNET: a network interface connected to the PC, Online editing, sending and receiving control for command.
- (3) RSET: system reset button.
- (4) RS232: communication interface connecting the external control equipment / supporting +camera tracking.
- (5) RS485: support camera tracking.
- (6) GPIO: command re-sending. Refer to the GPIO settings for the specific connection.
- (7) OUTPUT: analog audio output interface.
- (8) INPUT: analog audio MIC \ LINE input interface.